

AMERICAN-MADE LUXURY LIGHTING

OUTDOOR GAS AND ELECTRIC LAMPS, HANDCRAFTED JUST FOR YOU




AMERICAN
GAS LAMP WORKS

THE WORLD'S FINEST GAS AND ELECTRIC LAMPS



The Coachman

AMERICAN
GAS LAMP WORKS

WHO WE ARE

We are a veteran-owned, family-owned, craft-scale business located just outside Pittsburgh, Pennsylvania. Pittsburgh has been a center of American metalworking for centuries, and lamp manufacturing has always been a part of this tradition. American Gas Lamp Works was formed in 2012 as a revitalization of its generations-old predecessor company, Gas-Lite Manufacturing.

Since 2012, AGLW has expanded its products, designs, and options to feature a wide range of new styles, sizes, and finishes. Equally important, we have retained the tried-and-true handcraft techniques that have made our products so durable and exceptional for so long. We invite you to browse our collection and bring home the exceptional warmth and handcraft quality of American Gas Lamps!

WHAT WE DO

American Gas Lamp Works manufactures and sells the world's finest natural gas and electric luxury lighting fixtures.

Whereas nearly all other gas lanterns are made from bent and soldered sheet metal, our lamps are handcrafted from components formed by pouring liquid metal into sand-mold patterns. This foundry-casting technique results in sturdy, yet beautiful fixtures that will deliver warmth and ambiance to your home or outdoor living area for many years.

Welcome to the American Gas Lamp Works family.

Patrick Jardini
President



OUR PRODUCTS

Designed, manufactured, and shipped from our historic Springdale, Pennsylvania operations, our products are available online and through a nationwide network of retail and online dealers.



QUALITY

Our lamps are handcrafted from the finest foundry-cast aluminum, heavy-gauge copper, and commercial-grade components.

The Apollo



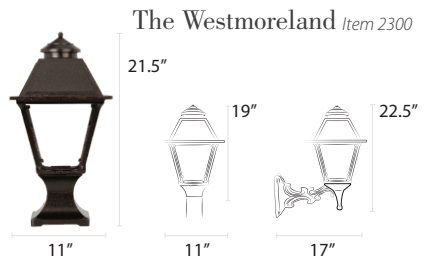
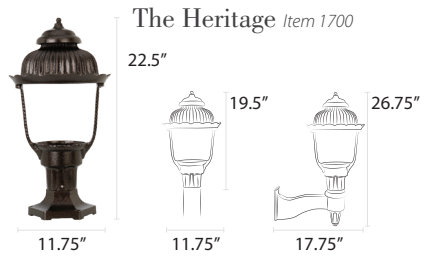
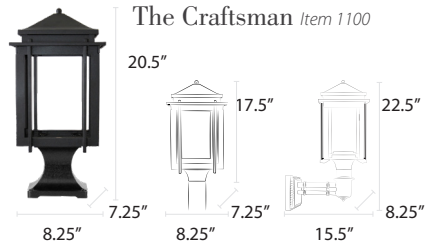
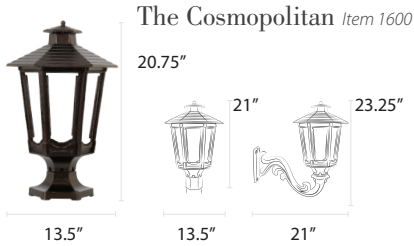
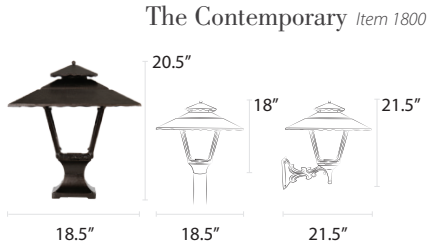
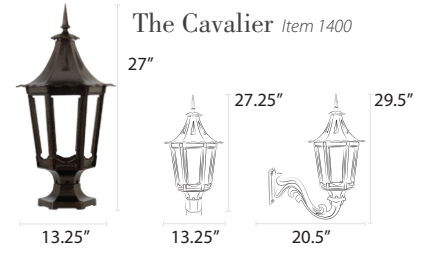
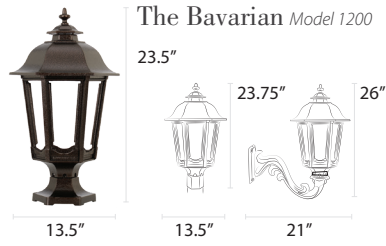
CUSTOMIZATION

Create your optimal blend of ambiance, performance and efficiency by configuring a custom lamp for your unique space.



Residential Lamps

Our residential lamps range from 10.75-13.5" wide x 19-27" tall and are available in post, pier, and wall mount configurations. Dimensions may vary based on custom selections.



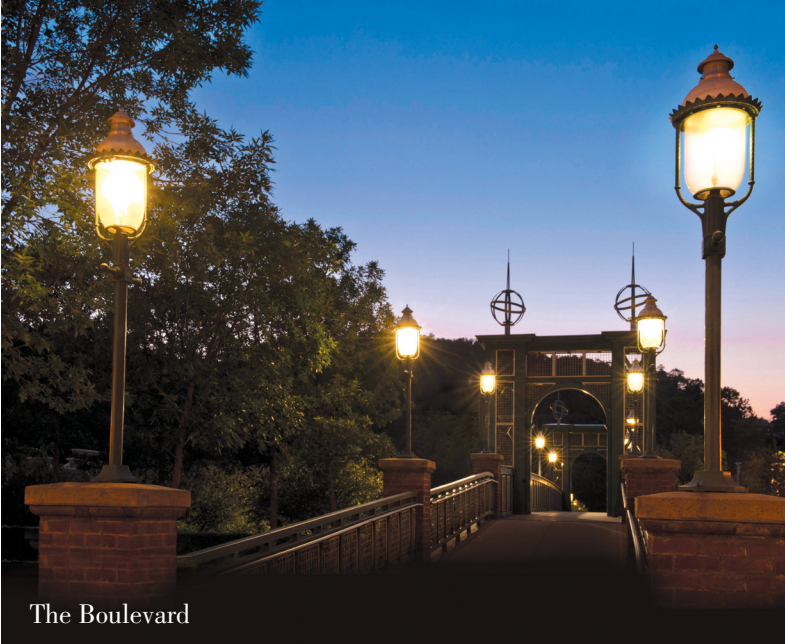
The Bavarian

Residential Posts



Residential Bases



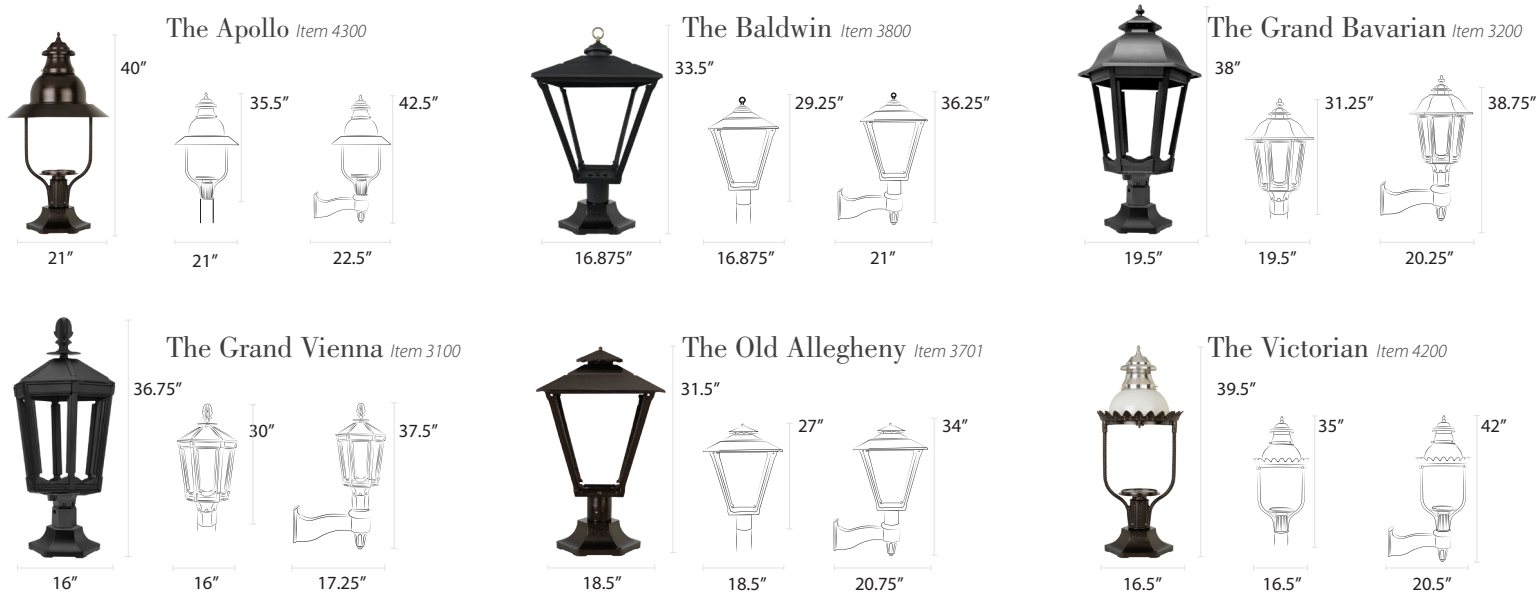


The Boulevard

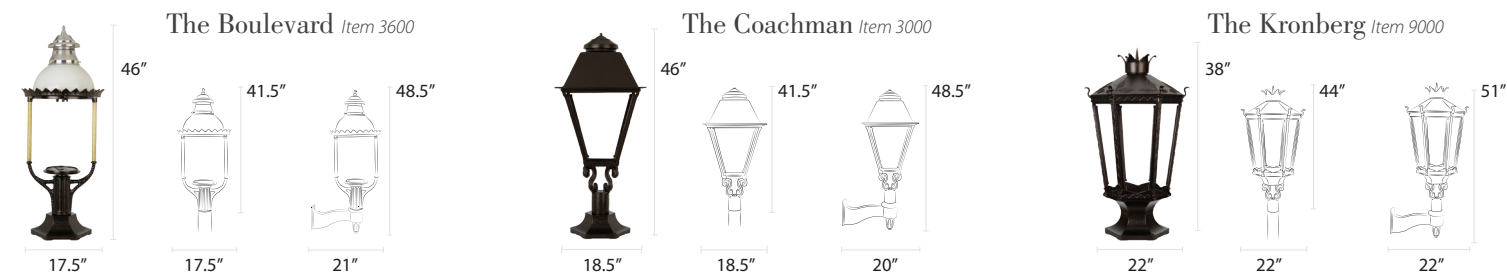


The Old Allegheny

Mid-Size Lamps



Estate Lamps



Finishes



Decorative Posts

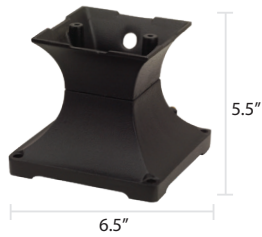
All posts measure 3" outside diameter unless noted.

Burial					Bolt Down					
Monroe EP002	Jefferson EP003	Adams EP023	Beatrice* EMB02	Middletown* EMT12	Colonial EPC01	Chartiers EP001	Belle Vernon EP012	Brentwood EP013	Oakmont EP123	Andrew* EMB12
										
9.5"	5.75"	9.5"	9"	16"	11"	11.75" x 13.5"	11.75" x 13.5"	11.75" x 13.5"	11.75" x 13.5"	10.25"
	30.75"		26"	30.5"	32.75"	31.5"	56.25"	81.5"	100"	44"
	50"	74.75"								

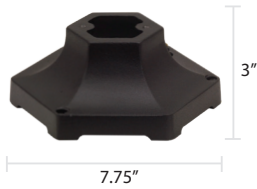
*3.5" Outside Diameter for use with Mid-Size and Estate Lamps.

Pier Mounts

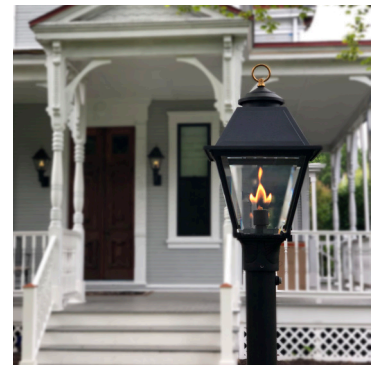
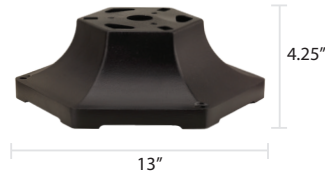
Four-Sided *RM1*



Small Six-Sided *RM2; RM3*



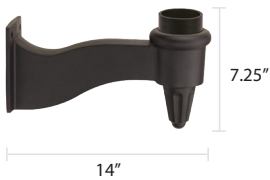
Large Six-Sided *RM4; RM5*



The Westmoreland

Wall Brackets

Universal *WM1*



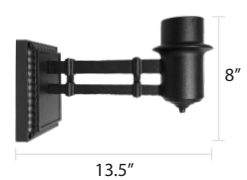
Four-Sided *WM4*



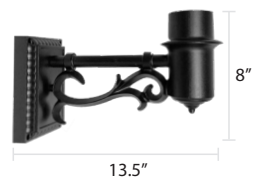
Six-Sided *WM6*



Craftsman *WM7*



Sewickley *WM8*



The Kronberg



The Westmoreland

Illumination Options



Natural Gas Open Flame

Create the candle-like ambiance of a flickering flame with natural gas open flame technology.



Traditional Electric

We offer a variety of incandescent socket base assemblies for use with LED or traditional light bulbs.



Gas Mantle

Generate usable light with natural gas or propane gas mantle burners, which use mesh mantles to provide a solid, white light.



Electric GasGlow® LED

GasGlow® LED technology mimics the look, color and intensity of gas mantle lighting with the added convenience of built-in LED circuitry.

Gas Torches

The Maui

Models T6000; T6100



The Tulip

Model T5000



The Luau

Model T4000



Infuse drama and romance into your outdoor entertainment space with the warm light of an open flame gas torch. Our cast aluminum gas torches can be configured for use with Natural Gas or Liquid Propane and are available in post and pier mount configurations. *Posts and pier mounts are sold separately.*

The Maui



AMERICAN GAS LAMP WORKS

The Westmoreland



For general inquiries, to place an order, or to become a retailer, please email:
Sales@AmericanGasLamp.com.

PHONE: (724) 274-7131 x100

TOLL FREE: 855-GAS-LITE (855-427-5483) x100

For other products and options, visit our website at AmericanGasLamp.com

Our products are made just outside Pittsburgh, Pennsylvania
and proudly ship from 101 Hoeveler Street, Springdale, PA 15144.