

Item # 1100 (CRAFTSMAN) POST MOUNT



FOR YOUR SAFETY

If you smell gas:

1. Shut off gas to the appliance.
2. Extinguish any open flame.
3. If odor continues, immediately call gas supplier.

FOR OUTDOOR USE ONLY

7" Water Column for Natural Gas
11" Water Column for Liquid Propane
Maximum Pressure 0.5 PSI

FOR YOUR SAFETY

Do not store or use gasoline or other flammable vapors and liquids in the vicinity of this or any other gas appliance.

THE LAMP HEAD MUST BE INSTALLED TO CONFORM WITH LOCAL CODES, OR IN ABSENCE OF LOCAL CODES, WITH THE NATIONAL FUEL GAS CODE ANSI Z223.1 – LATEST EDITION, CAN1-B149.1 or CAN1-B149.2

THE MINIMUM CLEARANCE FROM COMBUSTIBLE CONSTRUCTION IS 12" TOP BY 6" SIDE.

INSTALLER: Please leave instructions with the appliance for the consumer to retain for future reference

POST INSTALLATION (for standard burial steel or aluminum post):

1. Obtain a 3" outside diameter post with notch for valve access at top.
2. Install ¼"OD refrigeration type copper tubing inside post with ¼" flare nuts at each end. Tubing should be coiled 2½ times at top and protrude approximately 5" through hole at bottom of post.
3. If supplied, insert ladder rest through ladder rest holes and attach ornamental balls to each end.
4. Dig a hole 21" deep x 12" wide.
5. If using ladder rest, position post with ladder rest facing desired direction.
6. Attach the ¼" flare nut at the bottom of the post to the gas supply and tighten the flare nut clockwise. No sealants are necessary.
7. Secure post in plumb position and pour concrete around post to just below the level of the line access hole. Back fill.
8. If using a cast pedestal base: Remove the (4) screws and nuts from each side and place each piece of the base around the bottom of the post. Secure it together using the (4) screws and nuts. Push the base approximately 1–2" into the ground and secure in place using the back fill from the post. If the base is not secured in the ground, the freeze and thaw of the ground can cause the base to rise and fall, causing the finish of the post to scratch.

LAMP INSTALLATION:

1. Attach the ¼" flare nut at the top of the post to the gas valve inside the lamp collar. Tighten well.
2. Lower lamp head onto post or stud, aligning valve with access slot in top of post or stud. Check! Make sure hole is lined up with the valve stem, allowing you access to the valve.
3. Tighten set screw(s) in collar of lamp so lamp is well secured to post.
4. To install glass: Follow glass installation instructions on pages 3-4. *Note: Install all but one panel.
5. Be certain the lamp valve is in the OFF position (3 o'clock position) before turning on the main gas supply.
6. Leaving lamp valve in OFF position, turn on main gas supply and check all connections for leaks using a soapy solution. NEVER USE AN OPEN FLAME TO CHECK FOR GAS LEAKS! Tighten any leaky connections and recheck for leaks.
7. If using mantles, install mantles per instructions on packaging before turning lamp valve on. If using open flame, turn lamp valve ON (12 o'clock position) with a flathead screwdriver and slowly move flame toward burner tip until it ignites.
8. Install last pane of glass.
9. For gas mantle, leave valve full open. For open flame, adjust flame to ½ - ¾ open.

MAINTENANCE INSTRUCTIONS:

No combustible material, gasoline, or other flammable vapors or liquids should be stored near lamp. Nothing should obstruct the flow of combustion or ventilation air. Occasionally, the glass will need to be cleaned with household glass cleaner and gas mantles (if using) should be visually checked. Replace mantles if necessary. Gas lamp parts and mantles are available from:

AMERICAN GAS LAMP WORKS LLC
101 Hoeveler Street
Springdale, PA 15144
(Phone) 724-274-7131 or (Toll Free) 855-427-5483
www.AmericanGasLamp.com

CAUTION

TURN GAS SUPPLY OFF AND WAIT FOR LAMP TO COOL BEFORE PERFORMING ANY REPAIRS.
REMOVE AND CLEAN GLASS AND REPLACE MANTLES (IF APPLICABLE) AS NECESSARY.

INVERTED MANTLE CHANGING/LIGHTING INSTRUCTIONS:

1. Insert flathead screwdriver through the access hole in the lower collar of the lamp. Turn screwdriver to the right (to the 3:00 position) to turn off the gas.
2. Let the glass cool approximately 15-20 minutes.
3. Gently remove the glass by pushing the panel up with your fingers, then pull backward (toward you) and lower the panel from the bottom of the frame.
4. Carefully remove the old mantles from the ceramic burner tips by lifting the ceramic rings up, give ¼ turn, and pull down. Discard the old mantles and any debris lying in the bottom of the lamp.
5. Remove the new mantles from the packaging and install onto the ceramic burner tips by lifting the ceramic rings up and giving ¼ turn. *If using soft mantles, gently pull down to shape the mantles.*
6. With the gas still OFF, light the mantles by applying direct flame to the mantles; this is necessary to burn off the protective coating.
7. Once the protective coating burns off and the light goes out, insert a flathead screwdriver through the access hole in the lower collar of the lamp. Apply direct flame to the mantles with a lighter or a match – be sure not to touch the mantles, as they are very fragile – and slowly turn the screwdriver to the left (towards the 12:00 position).
8. Once lit, turn the gas on full (to the 12:00 position) and replace the glass panel.

OPEN FLAME BURNER LIGHTING INSTRUCTIONS:

1. Insert flathead screwdriver through the access hole in the lower collar of the lamp. Turn screwdriver to the right (to the 3:00 position) to turn off the gas.
2. Let the glass cool approximately 15-20 minutes.
3. Gently remove the glass by pushing the panel up with your fingers, then pull backward (toward you) and lower the panel from the bottom of the frame.
4. Turn lamp valve ON (to the 12:00 position) with a flathead screwdriver and slowly move flame toward burner tip until it ignites.
5. Once lit, replace the glass panel and adjust flame to ½ - ¾ open by SLOWLY turning the lamp valve towards the 3:00 position. Turning the valve too fast or too far can cause the flame to extinguish.

*For additional assistance, please contact our Customer Support Team at 724-274-7131 or
Sales@AmericanGasLamp.com.*

Item # 1100 (CRAFTSMAN) GLASS INSTALLATION

IMPORTANT: ALWAYS INSTALL THE WIDE PIECES OF GLASS FIRST!

1. With the long side facing up and down, slide the glass through the smaller side of the lamp (Figure A).
2. Once the glass is inside the lamp, angle it (Figure B) so it is below the glass guide tabs on the inside top panel (Figure C).
3. Slide the glass up under the guide tabs at the top of the lamp until it won't go any further. It needs to be pushed up so it is high enough above the bottom glass tabs (Figure D).
4. Gently slide the glass back down behind the guide tabs at the bottom of the lamp and let it rest on the ledge (Figure E).
5. Repeat these instructions for inserting the glass on the opposite side of the lamp. Then follow the instructions on the next page for installing the side pieces of glass.

Figure A



Figure B



Figure E



Figure C
*Top Glass
Guide Tabs*

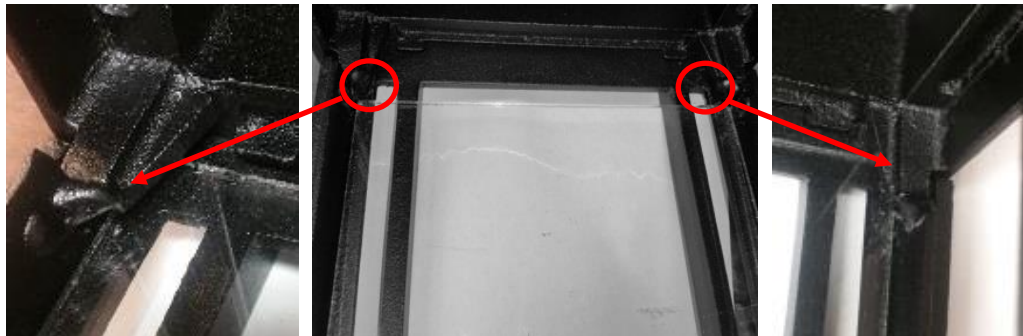


Figure D
*Bottom Glass
Tabs*



IMPORTANT: MAKE CERTAIN THE TWO WIDE PIECES OF GLASS INSTALLED BEFORE INSTALLING THE SIDE PIECES!

1. Slide the glass up inside the frame (Figure F).
2. Make sure the glass is slid up high enough so it is above the glass tab at the bottom of the lamp (Figure G).
3. Slide the glass behind the glass tab at the bottom of the lamp and rest it on the lamp frame (Figure H).
4. Repeat these instructions for inserting the glass on the opposite side of the lamp.

****REMOVING THE GLASS PANES****

When removing the glass, always remove the small pieces first by sliding the glass UP into the top of the lamp and gently pull the bottom of the glass OUT and DOWN.

Remove the wide pieces by sliding the glass UP into the top of the lamp and pulling the bottom OUT and DOWN far enough to clear the top glass tabs (see figure C) at an angle. Then slide the glass out through the smaller side of the lamp.

Figure F



Figure G
Glass Tab



Figure H

